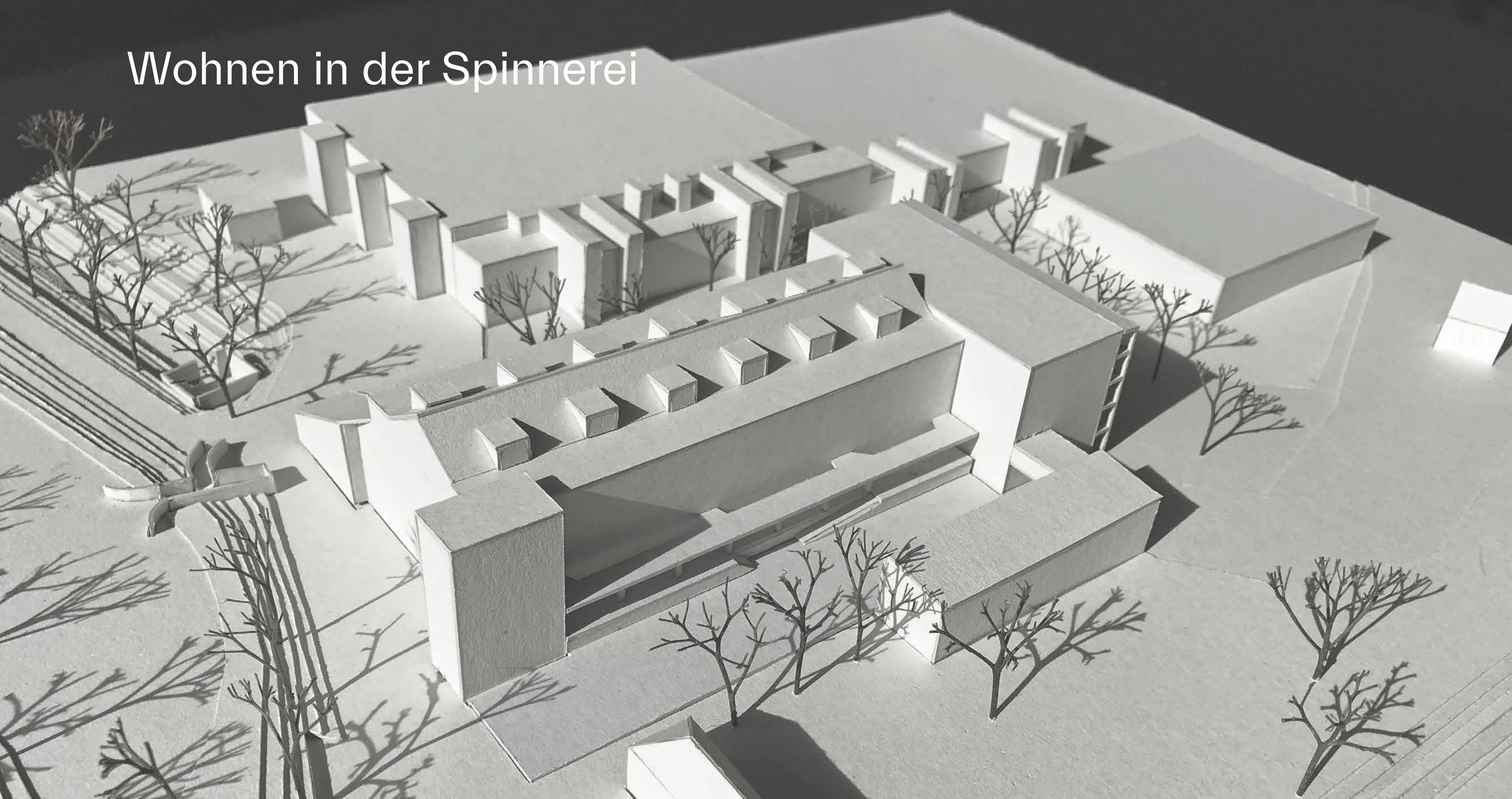
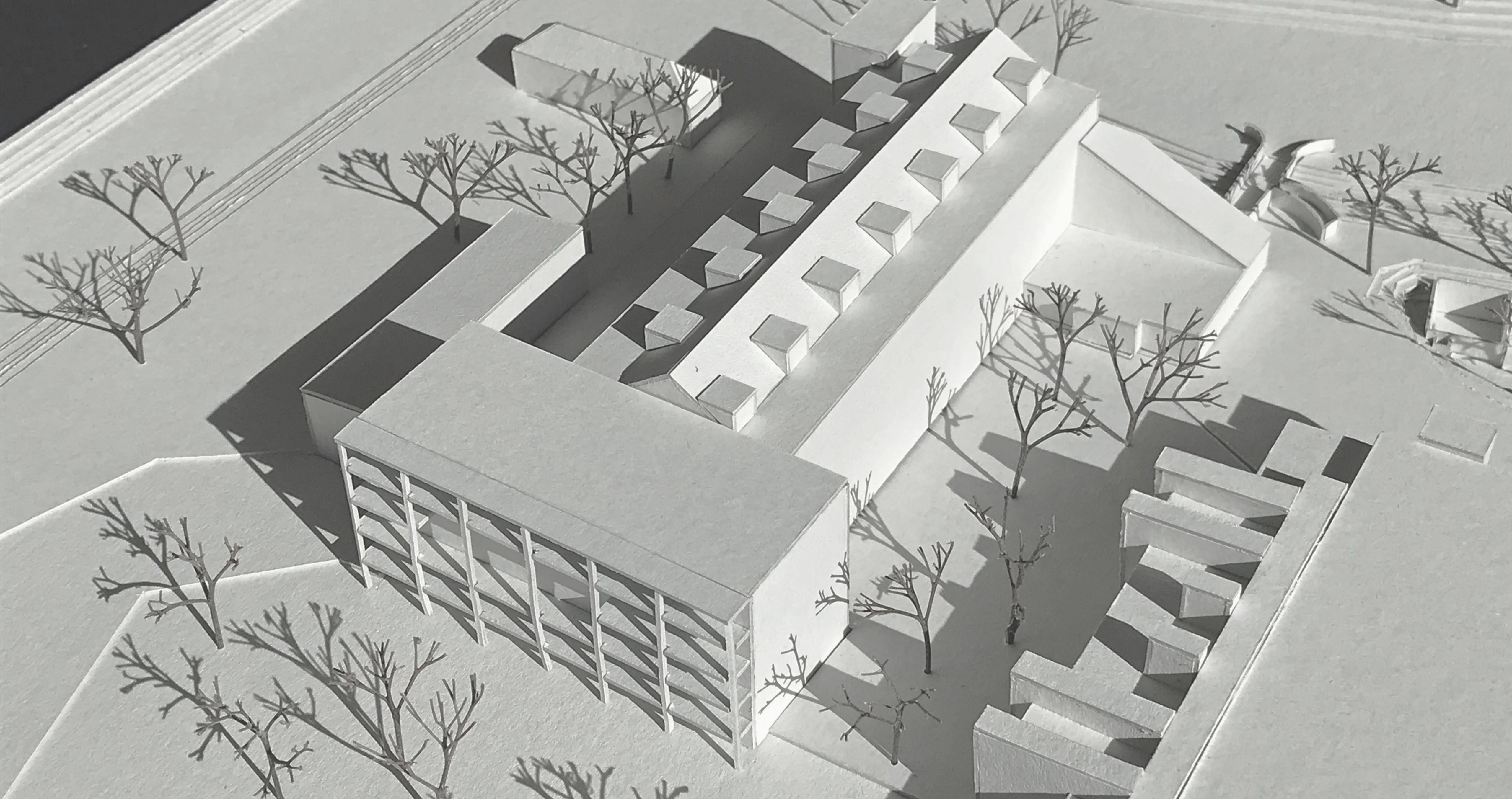


Wohnen in der Spinnerei





Bestehende Gebäude



Diagonal Architekten AG

BÜHLERAREAL

Umnutzung Bühler-Areal

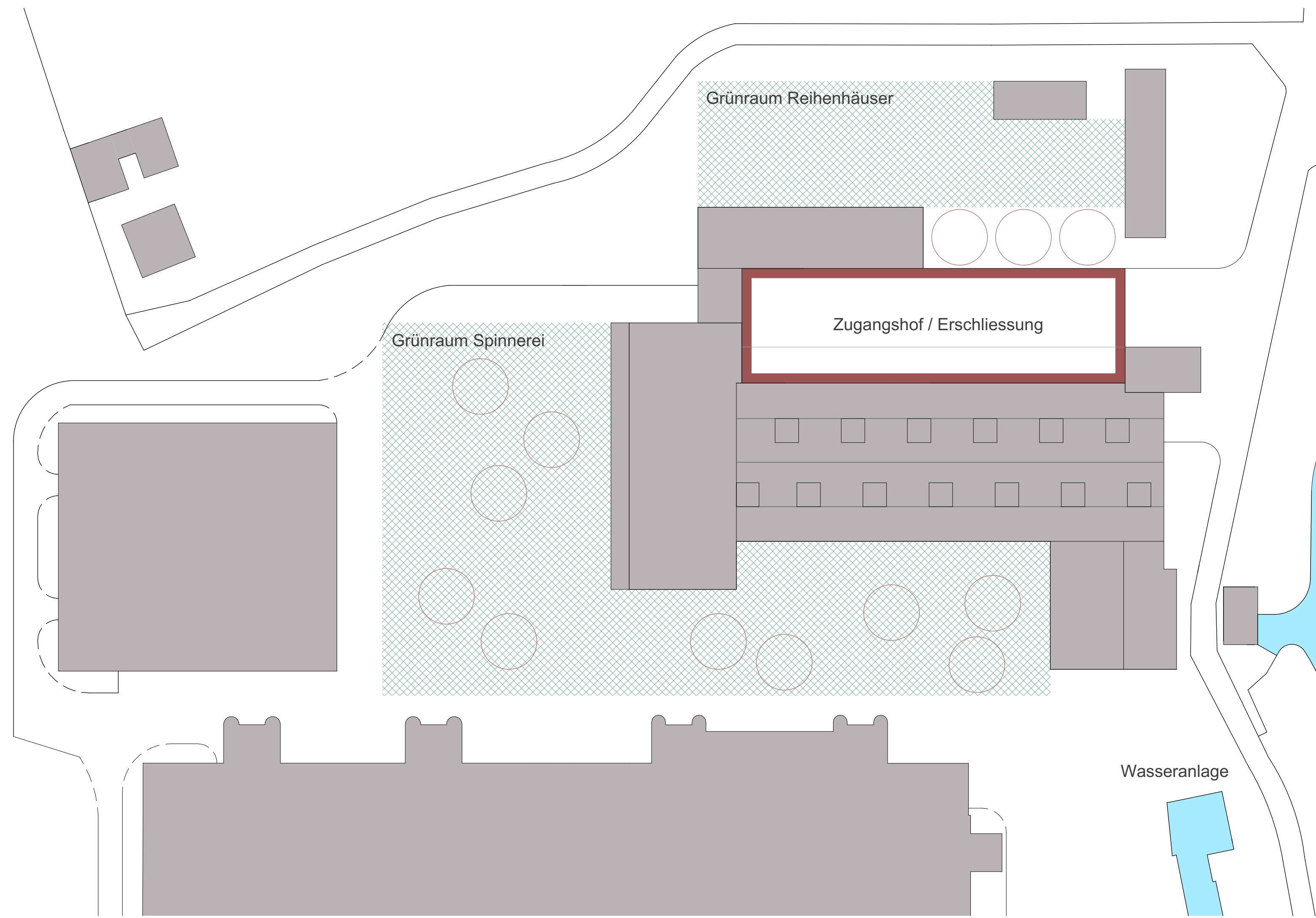
Rückbauten



Neue Gebäudeteile



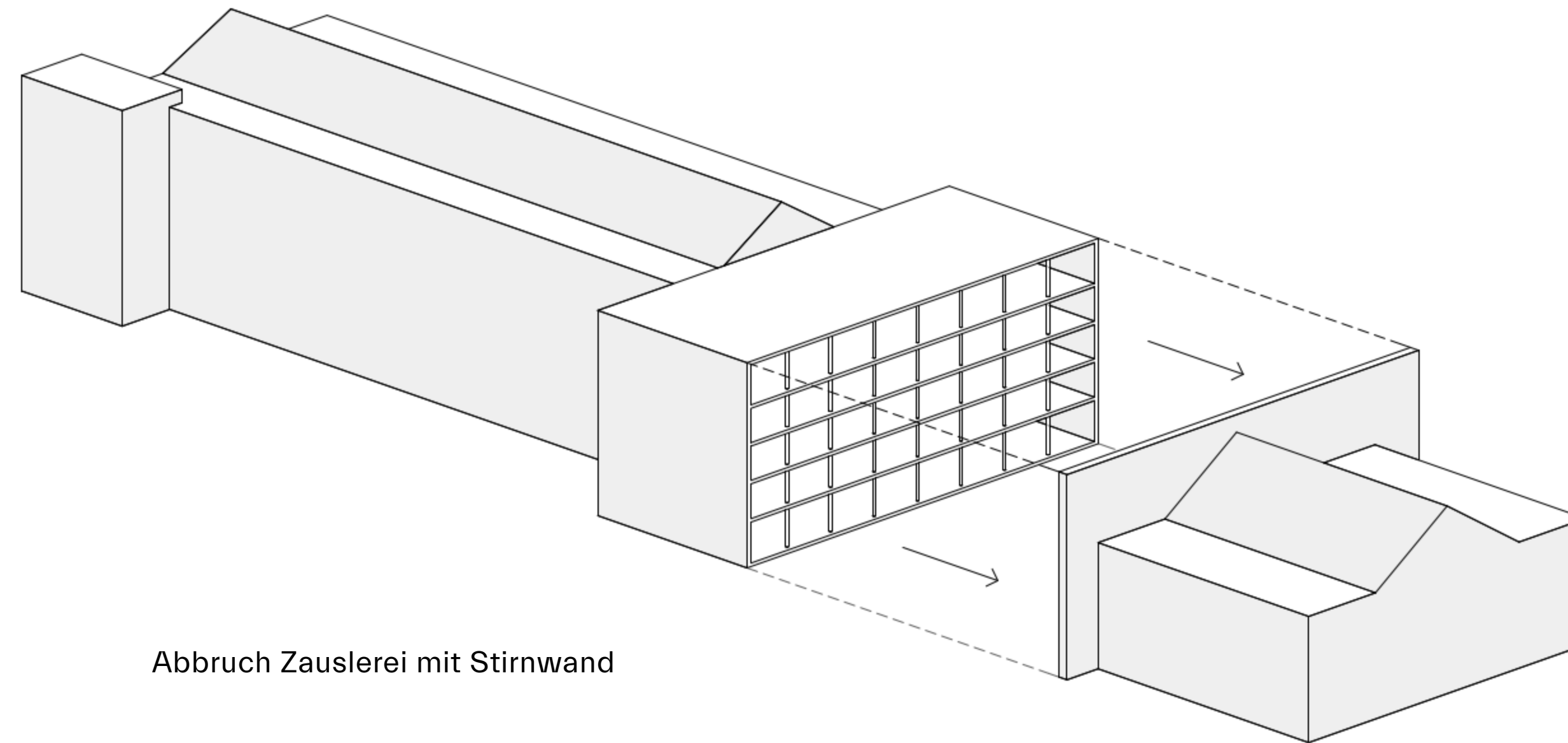
Schema Aussenräume



Zugang Spinnerei - Erschliessungsplattform



Balkonschicht Kopfbau

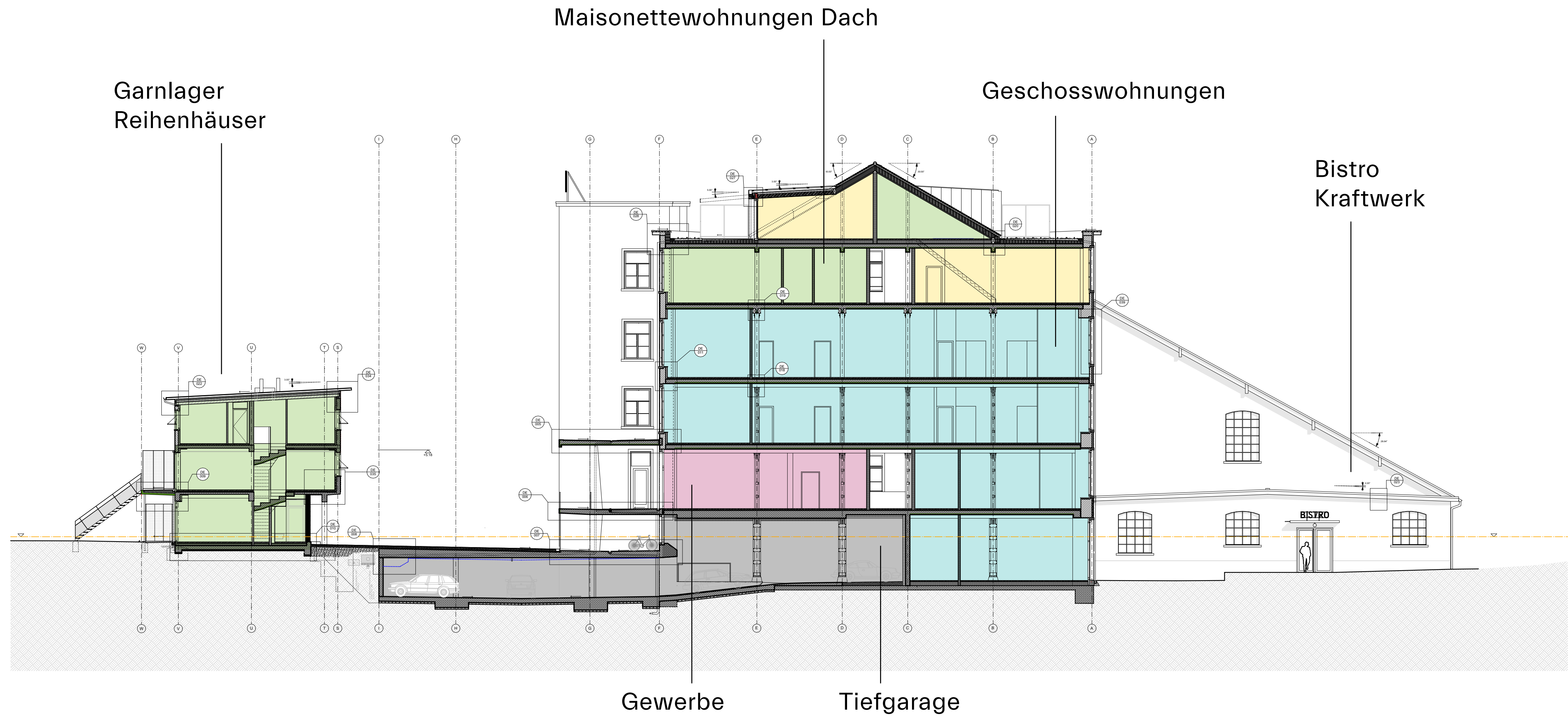


Abbruch Zauslerei mit Stirnwand

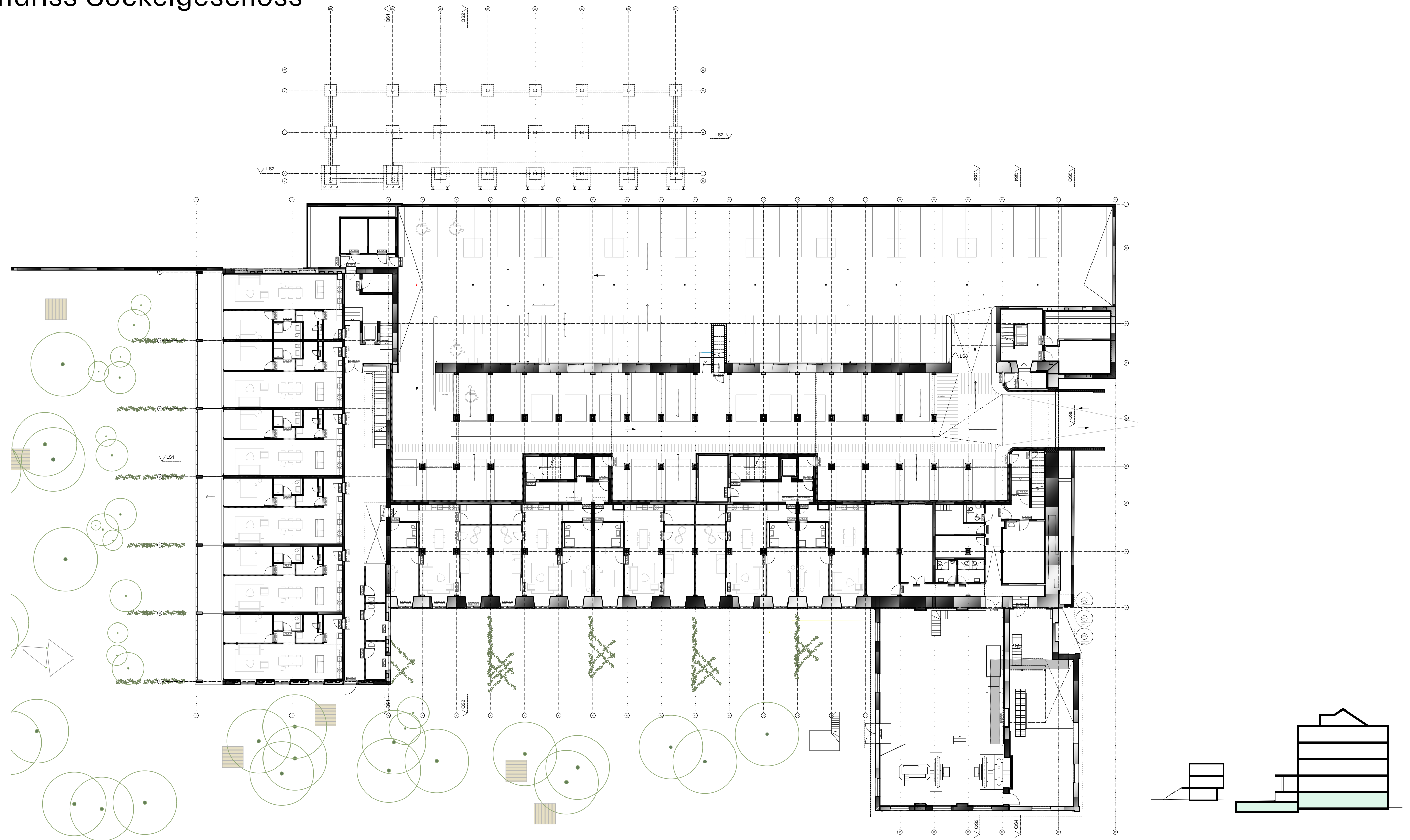
Balkonschicht Kopfbau



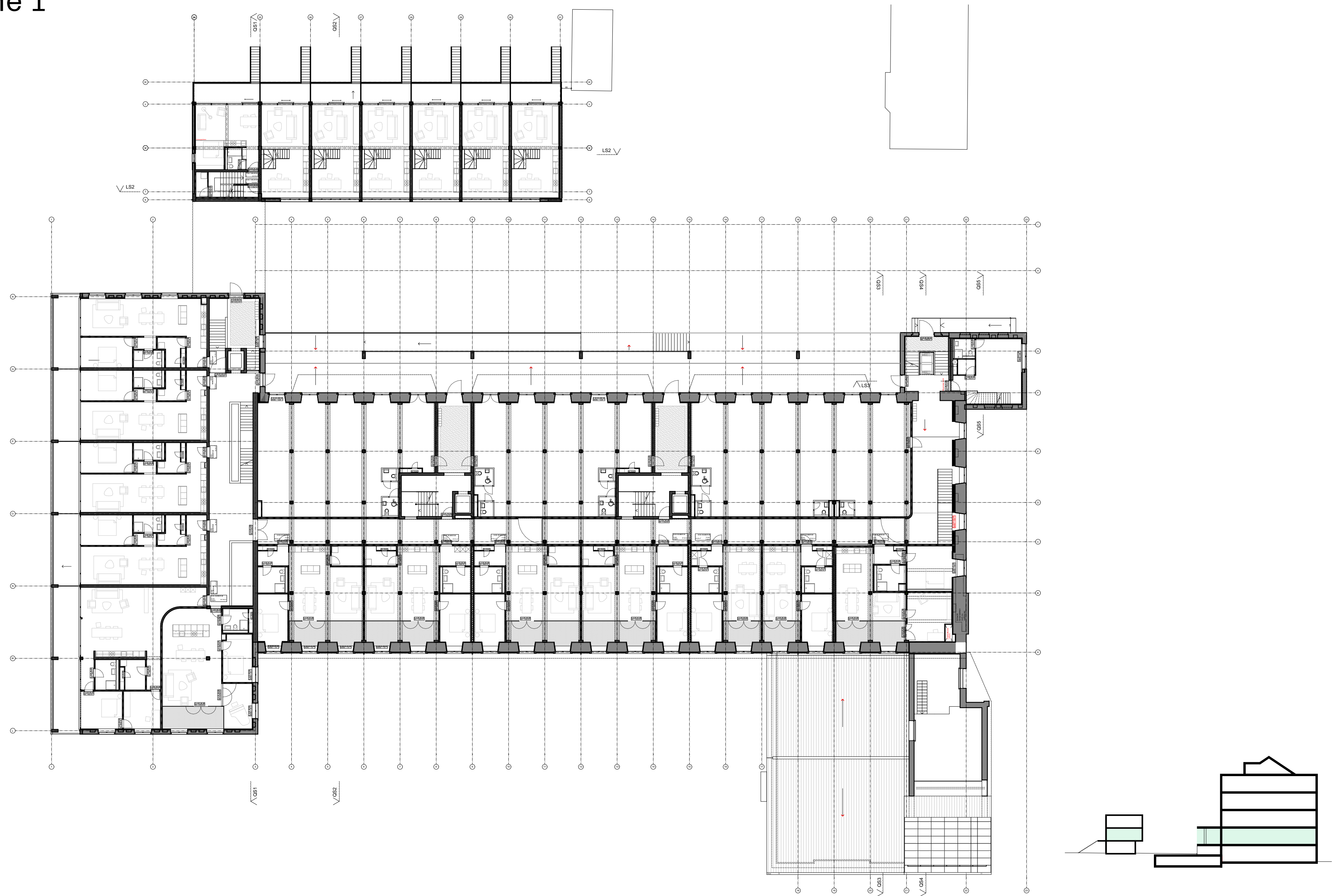
Querschnitt 2



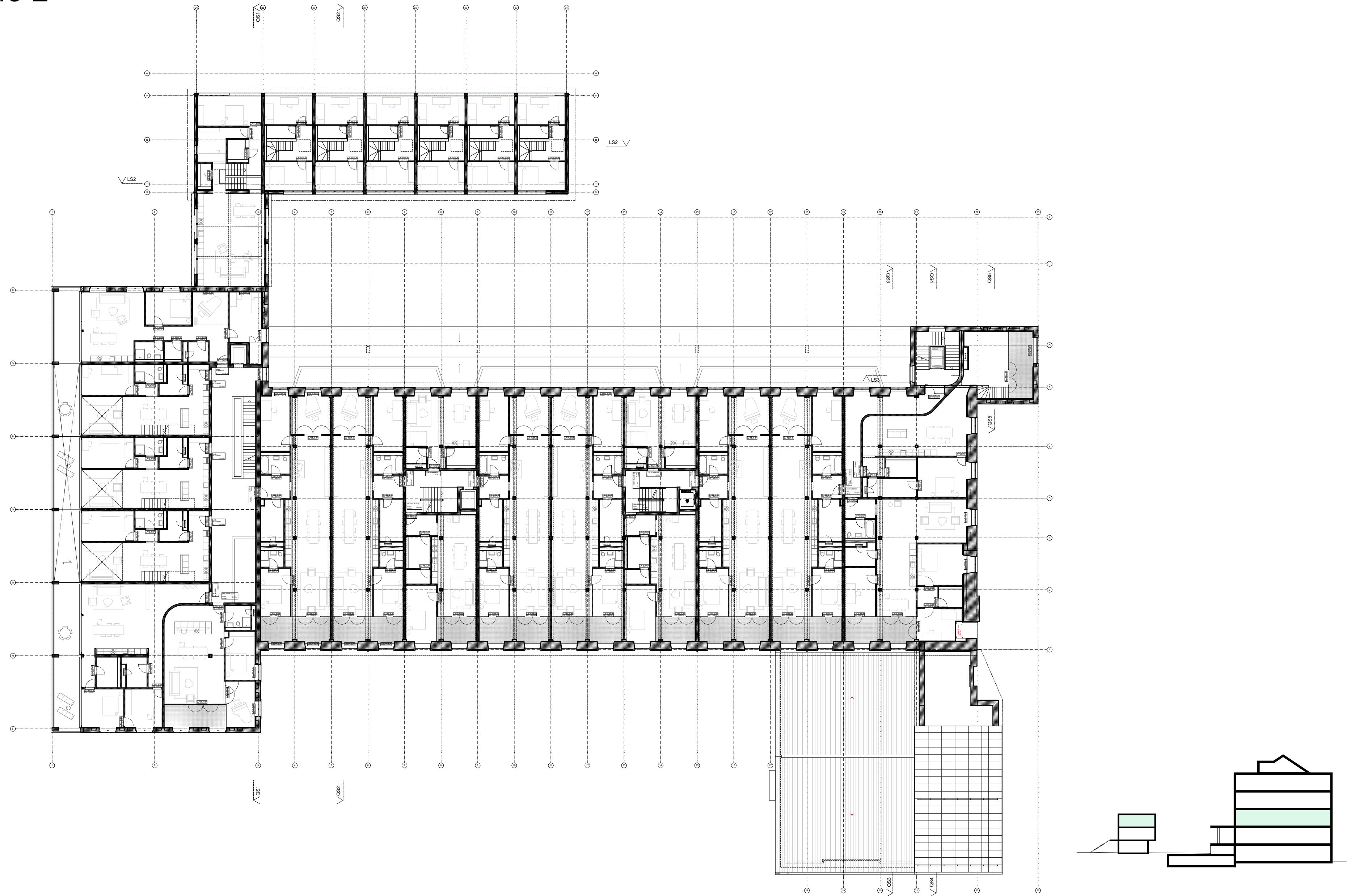
Grundriss Sockelgeschoss



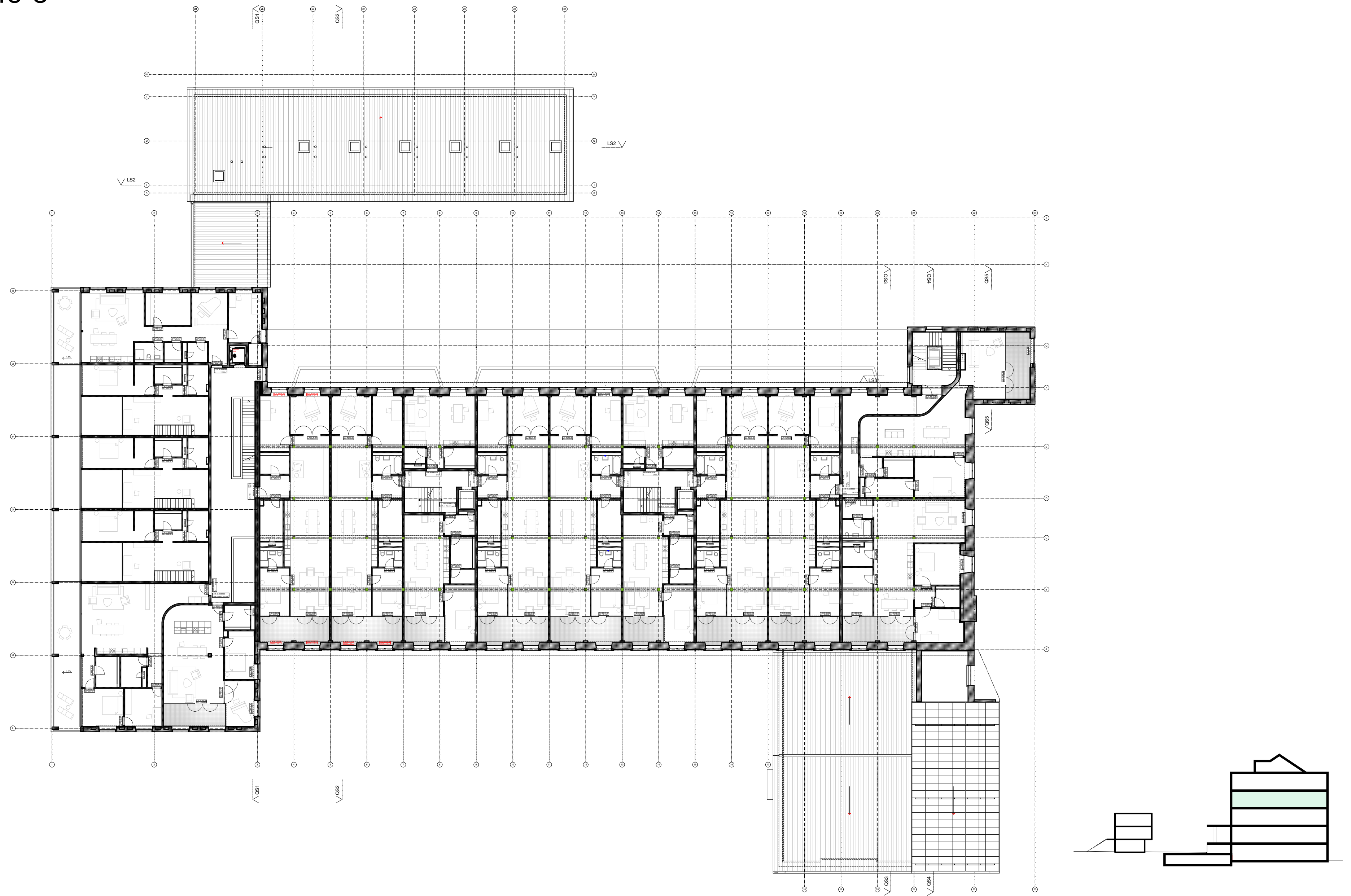
Grundriss Ebene 1



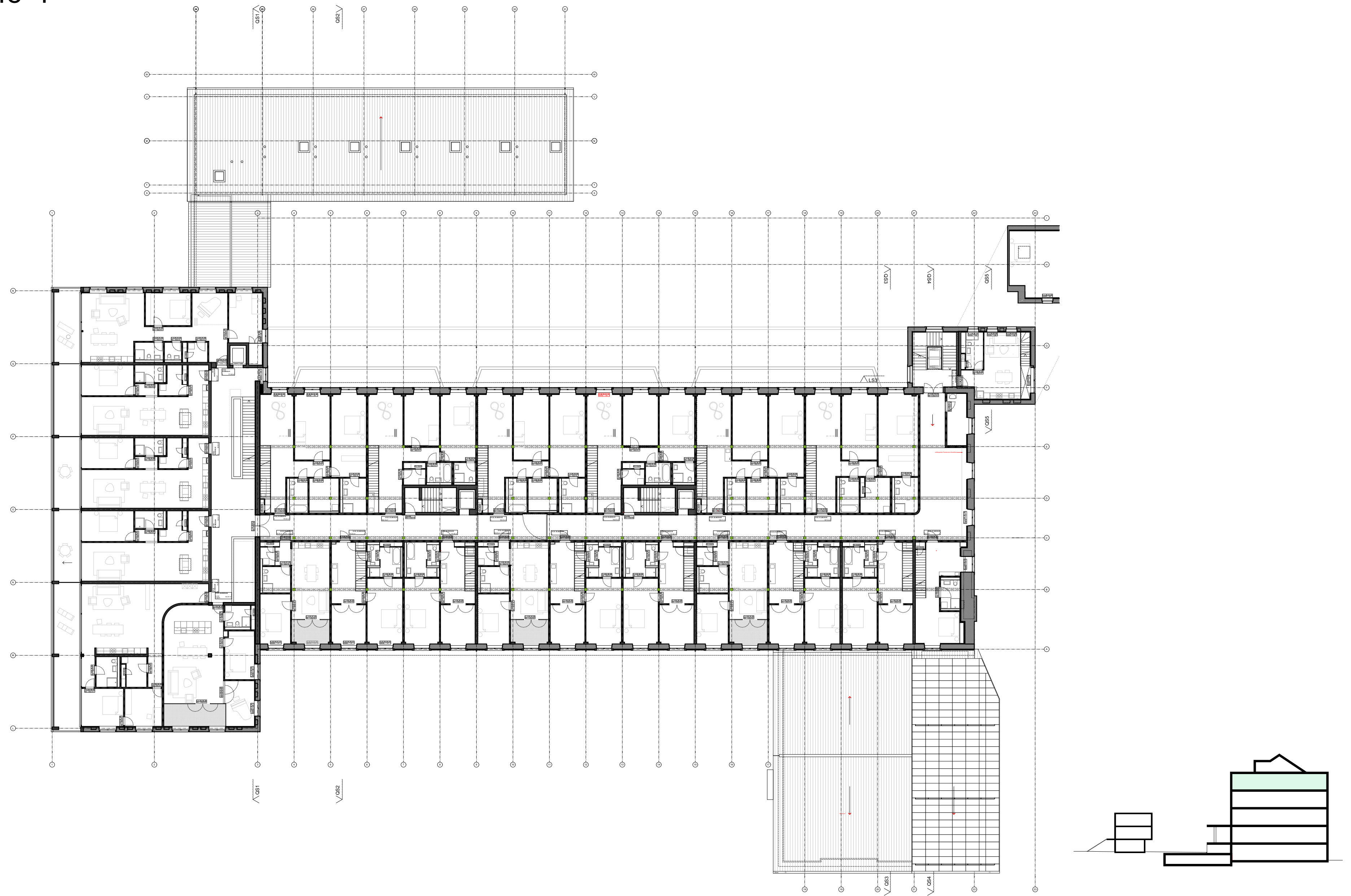
Grundriss Ebene 2



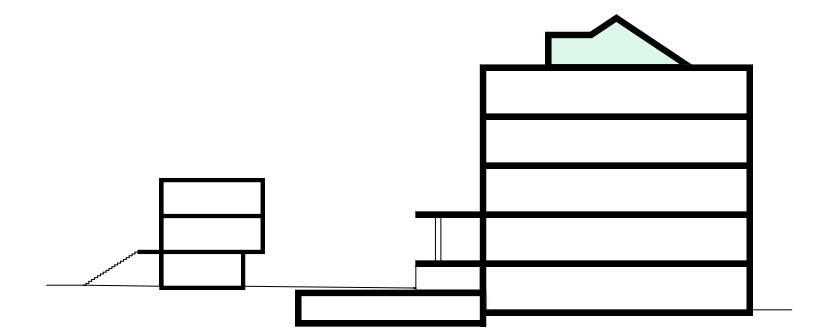
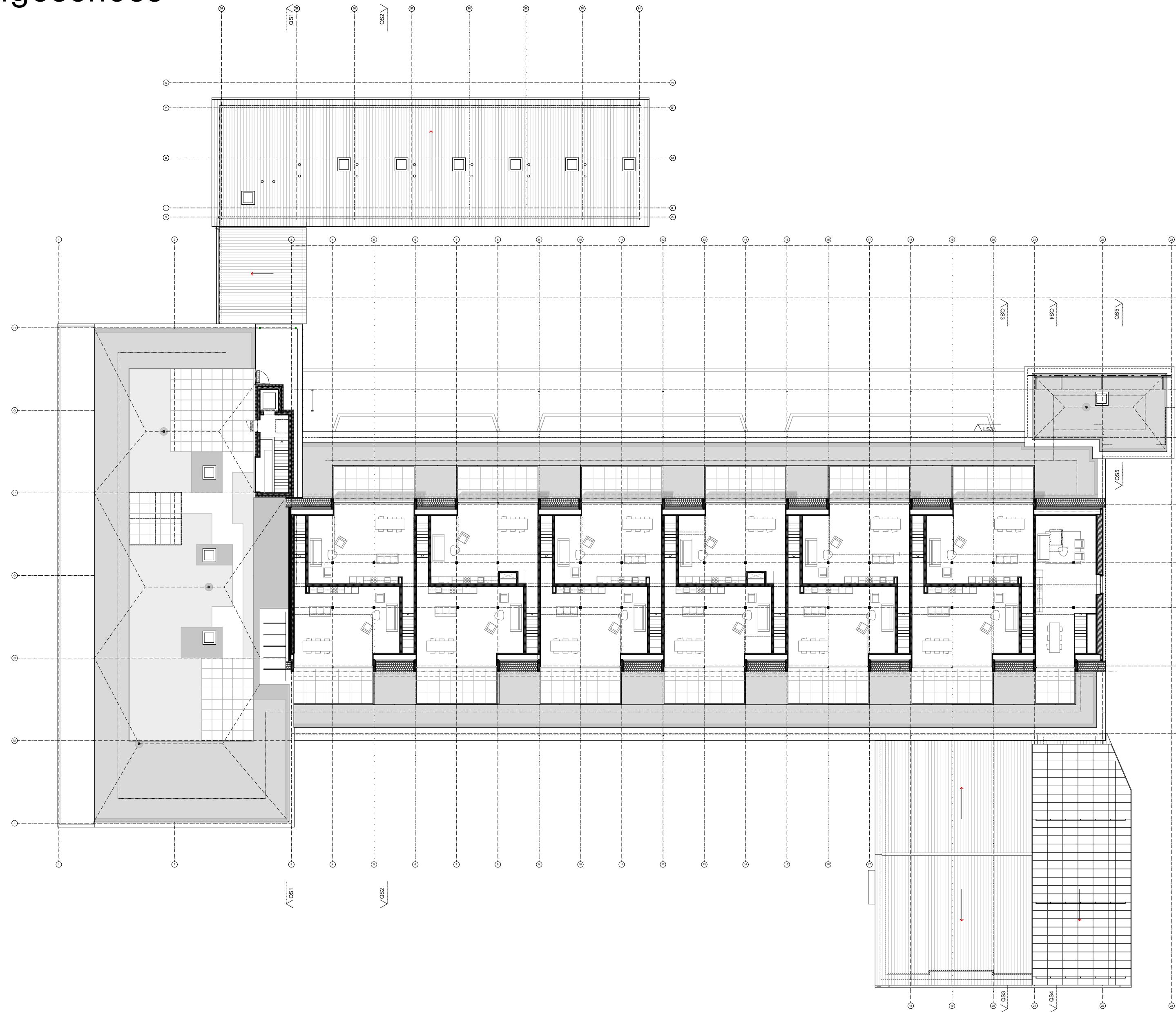
Grundriss Ebene 3



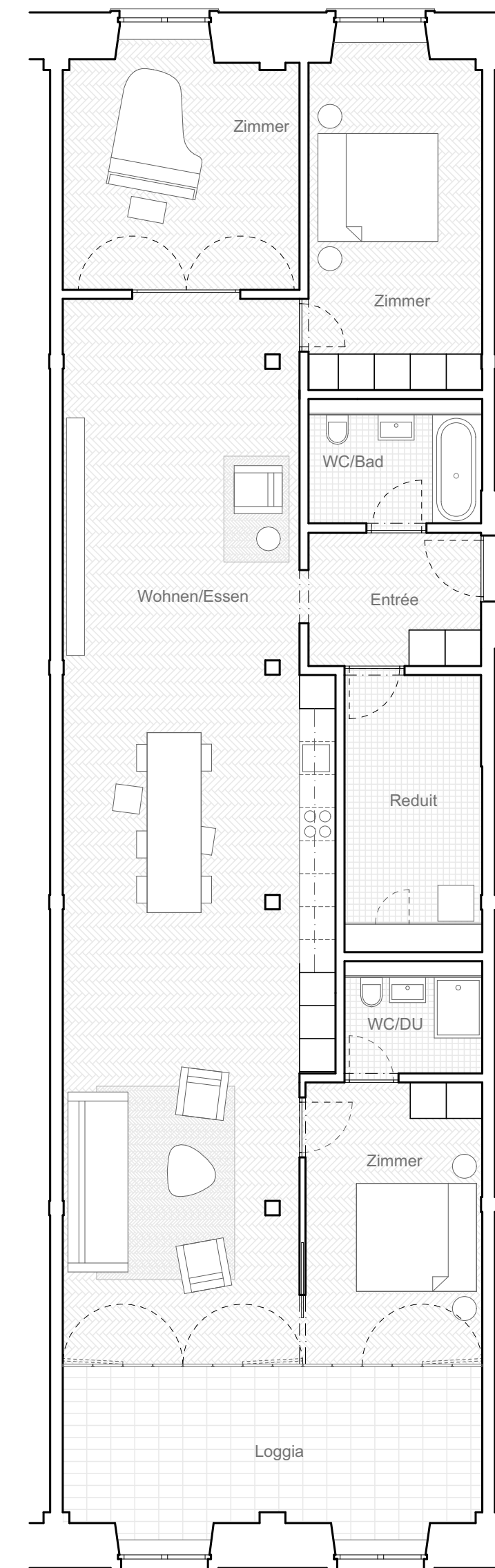
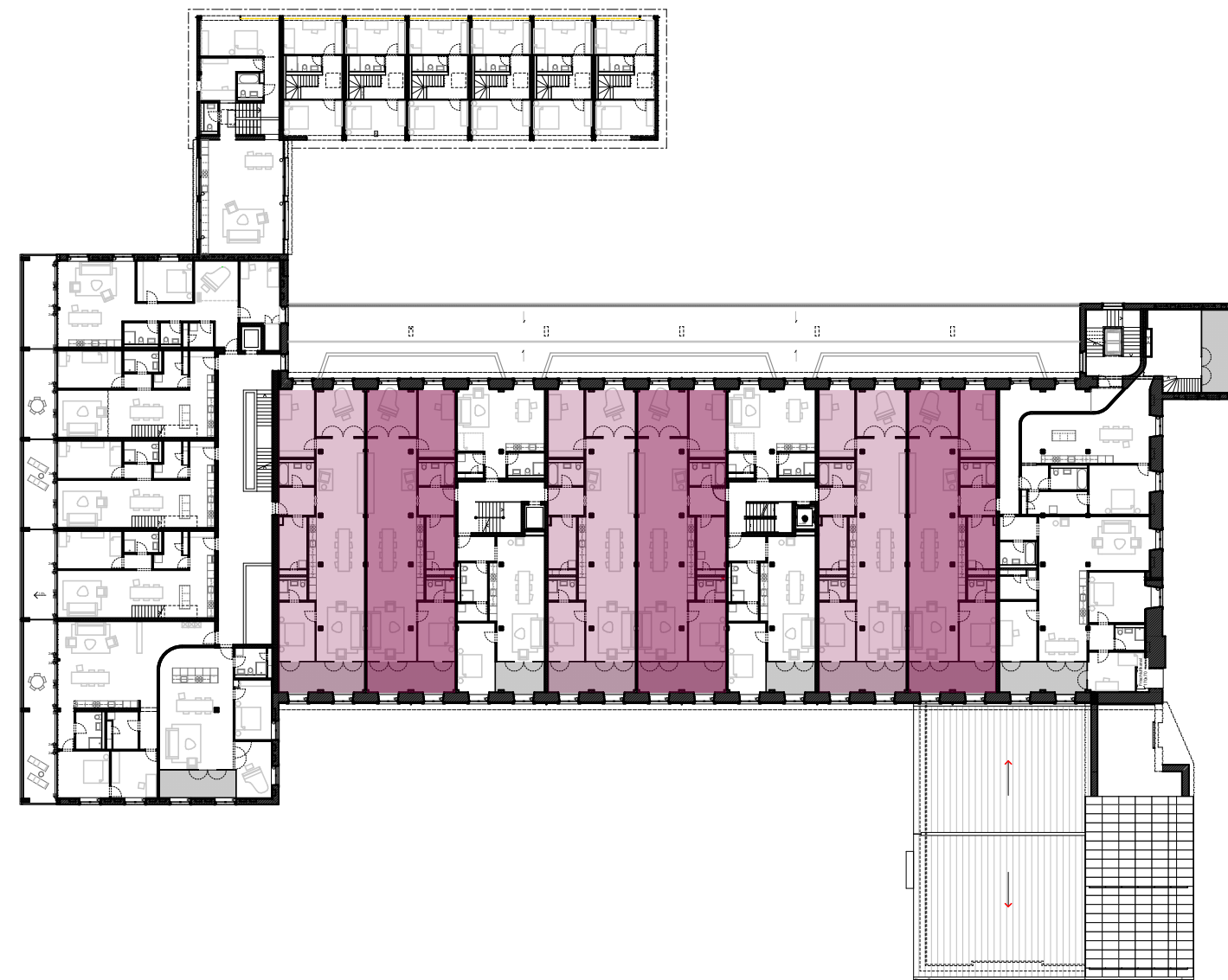
Grundriss Ebene 4



Grundriss Dachgeschoss

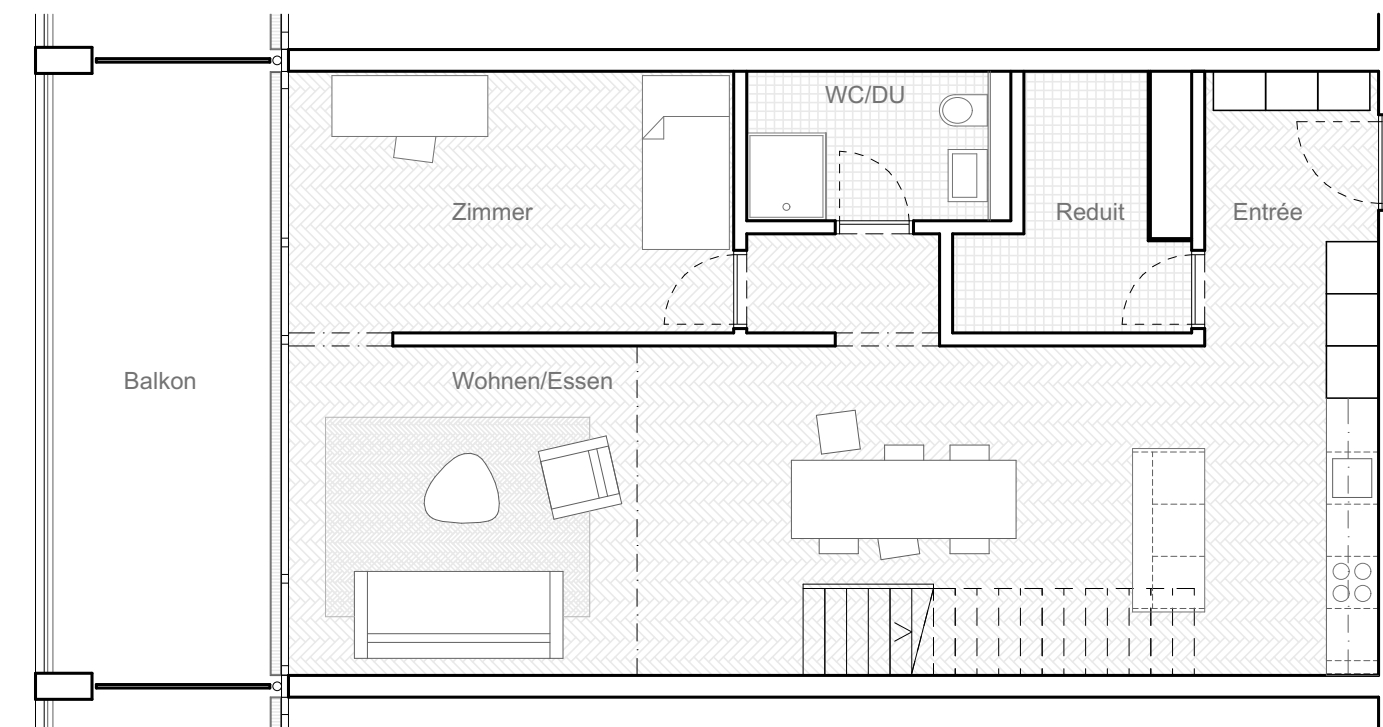
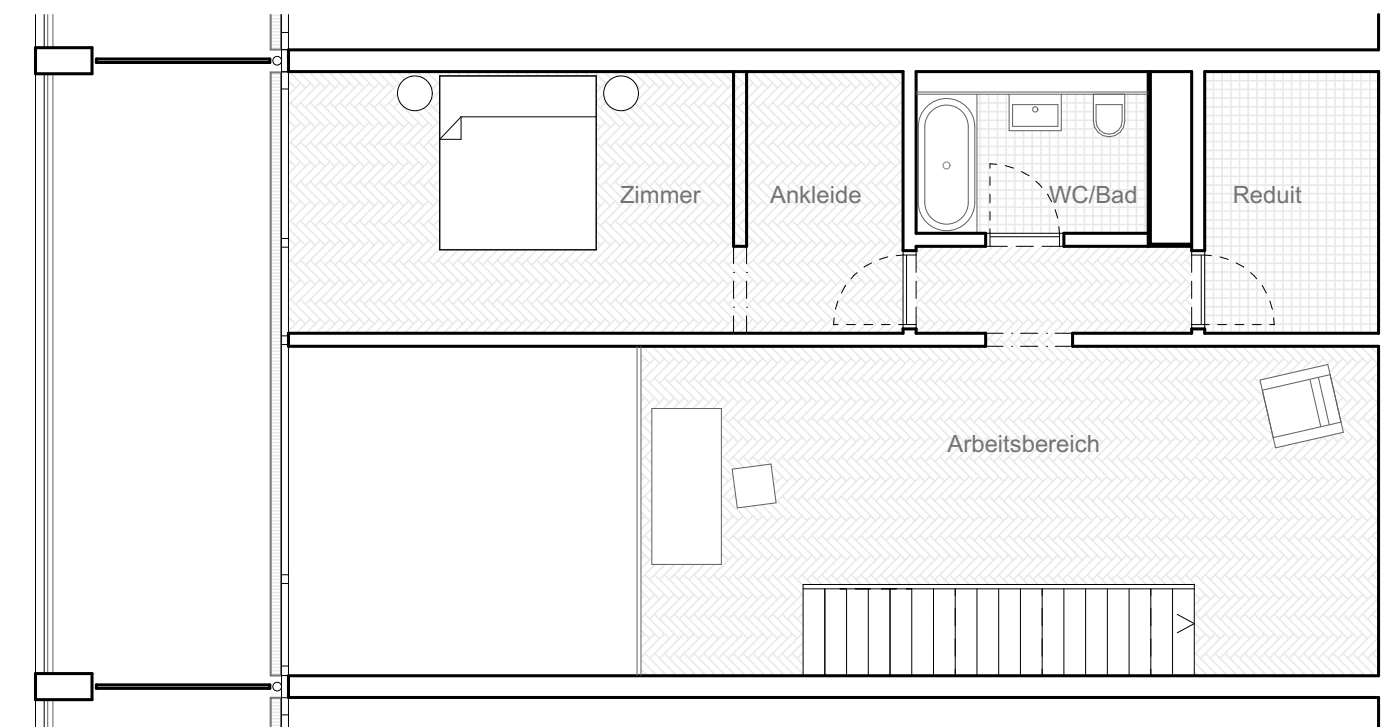
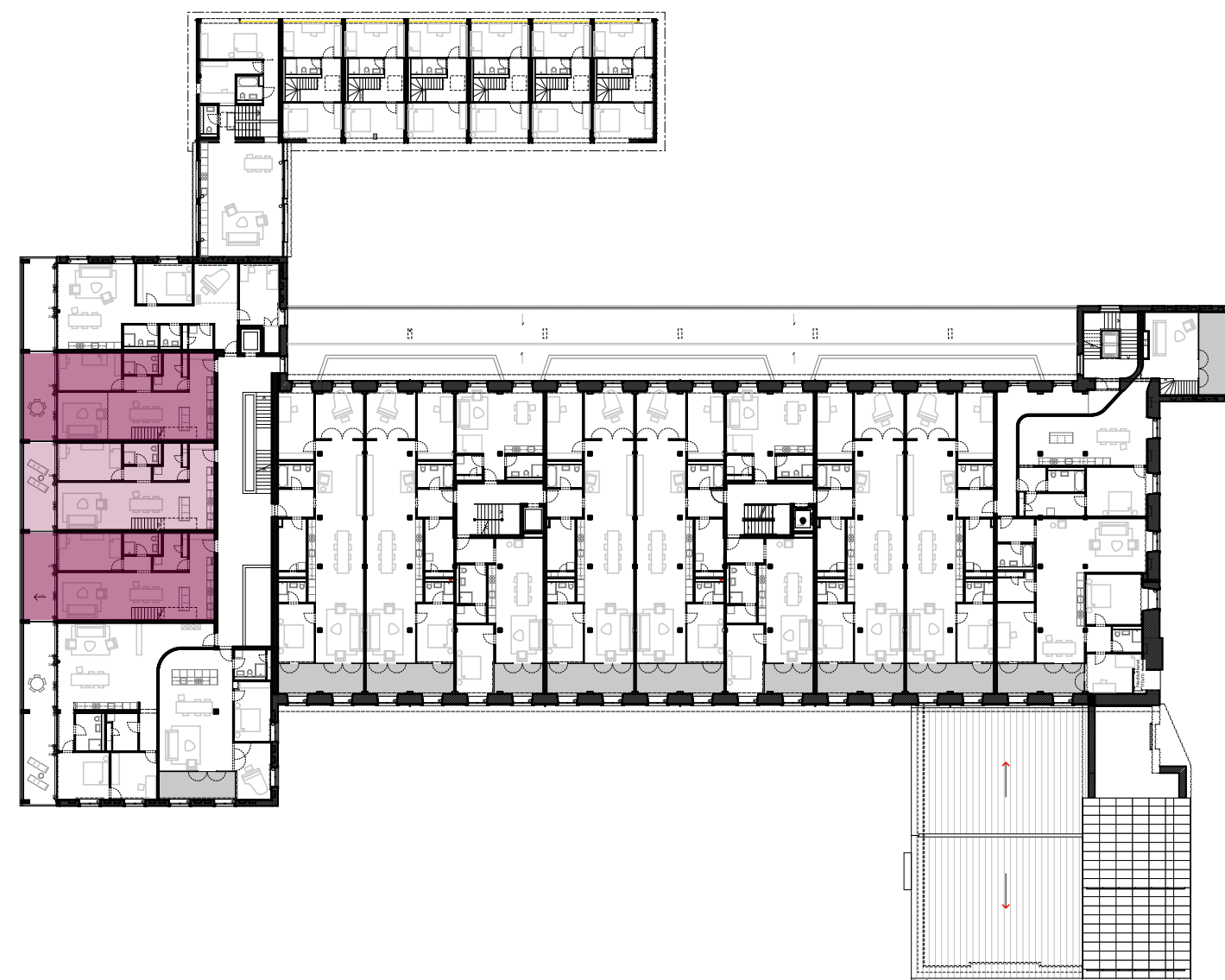


Durchlaufende 4.5-Zi Wohnung Altbau





4.5-Zi Maisonette Wohnung Kopfbau





Bestandsfotos





Ehemaliger Spinnsaal











Ehemalige Turbine und Dieselgenerator



